

ZE1012- Separation of Peptides and Small Proteins using Zenix SEC-100

HPLC Column, Sepax, Zenix SEC-100, 3um, 100 A 7.8 x 300 mm
(213100-7830)

HPLC Column, Sepax, Zenix SEC-100, 3um, 100 A 4.6 x 150 mm
(213100-4615)



Humalog Insulin separation on Zenix SEC-100

Column: Zenix SEC-100, 3 μ m, 100Å, 7.8 x 300 mm;

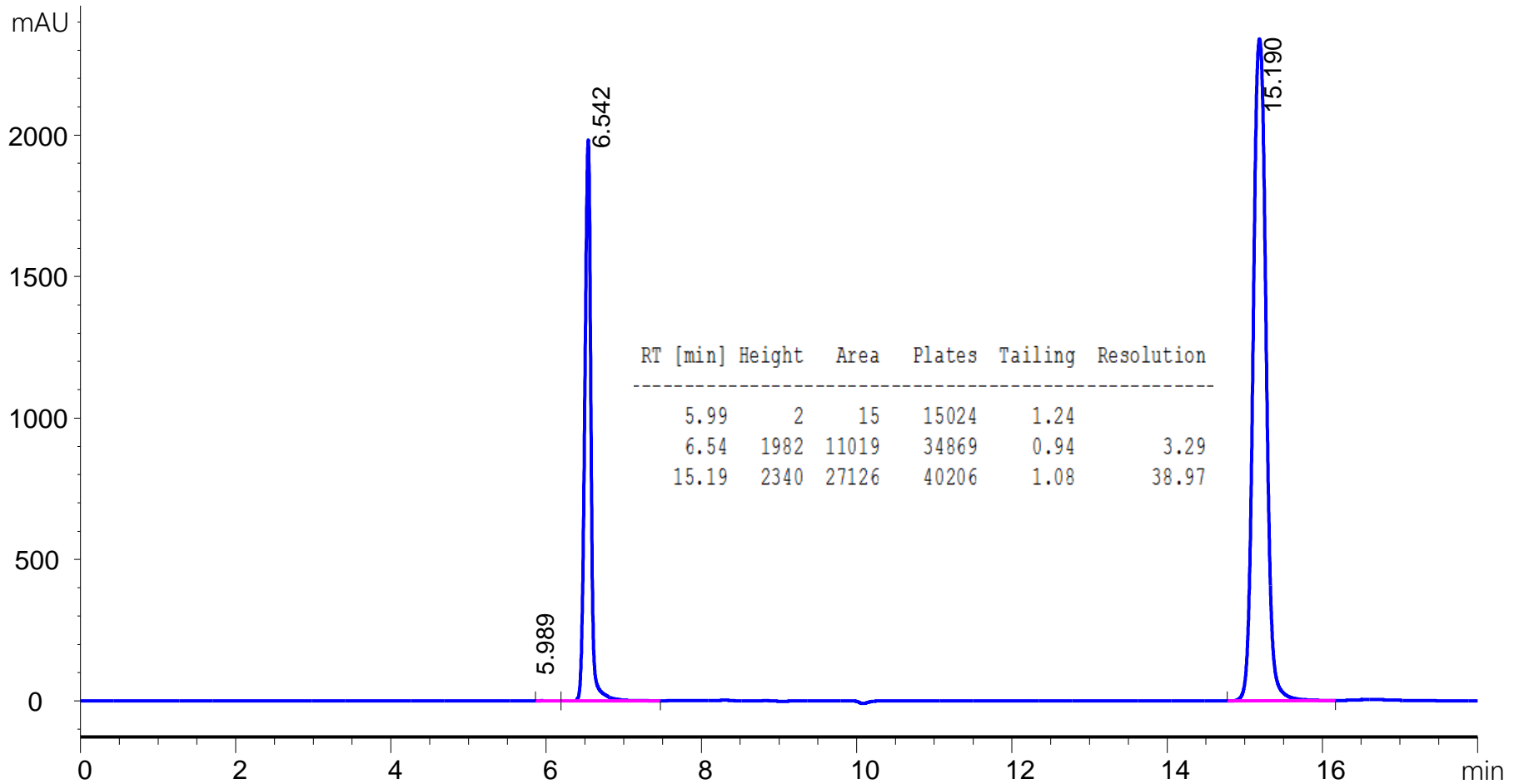
Mobile Phase: 0.1% TFA + 50% ACN

Flow rate: 1 ml/min

Column Temperature: 30°C

Detection: UV 225 nm

Sample: Humalog (3.47 mg/mL), 5 μ L



Glucagon separation on Zenix SEC-100

Column: Zenix SEC-100, 3 μ m, 100Å, 7.8 x 300 mm

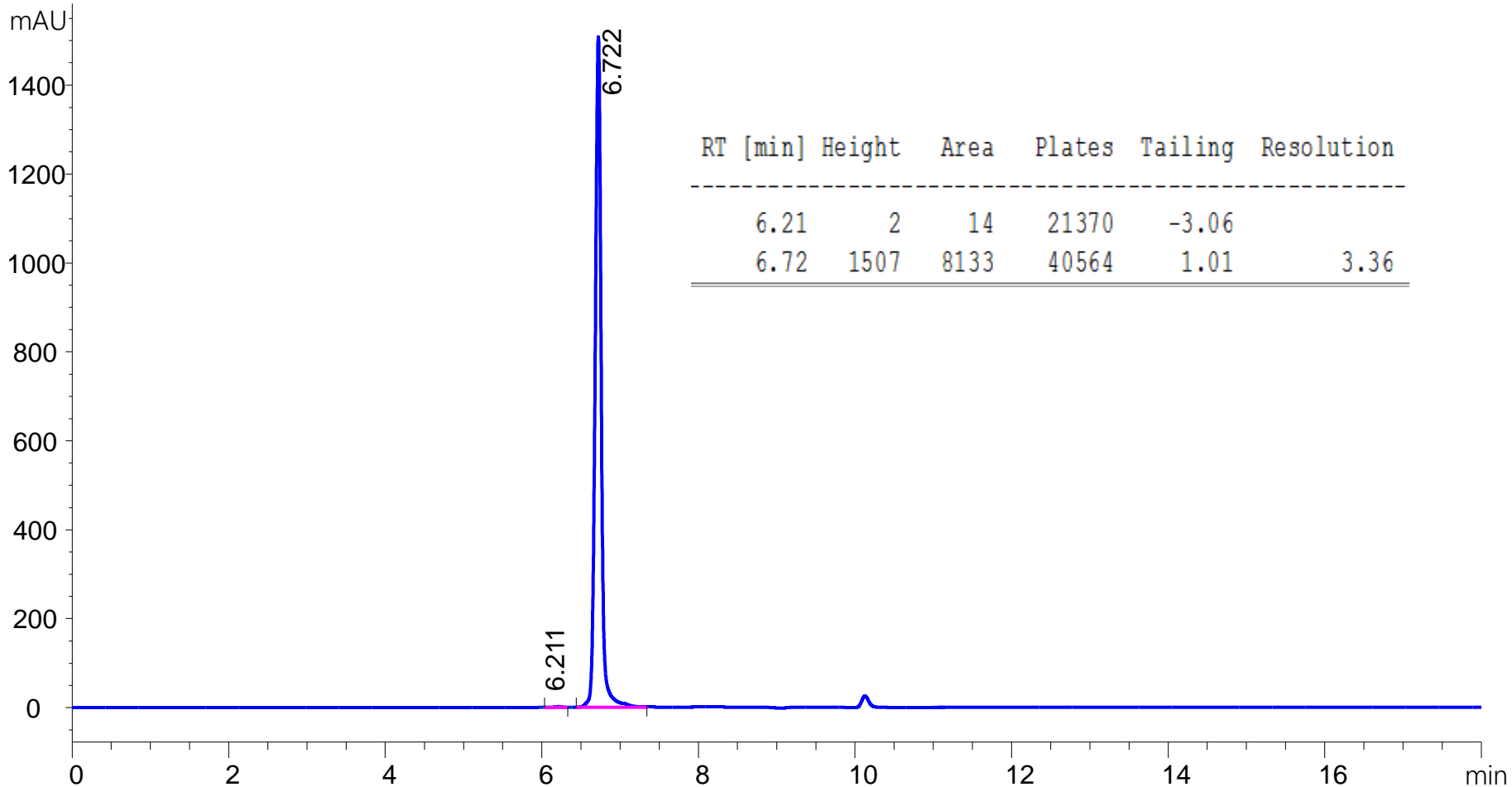
Mobile Phase: 0.1% TFA + 50% ACN

Flow rate: 1 ml/min

Column Temperature: 30°C

Detection: UV 225 nm;

Sample: Glucagon (2 mg/mL in 50 mM acetic acid), 5 μ L



Ribonuclease A, Sigma Insulin and Somatostatin

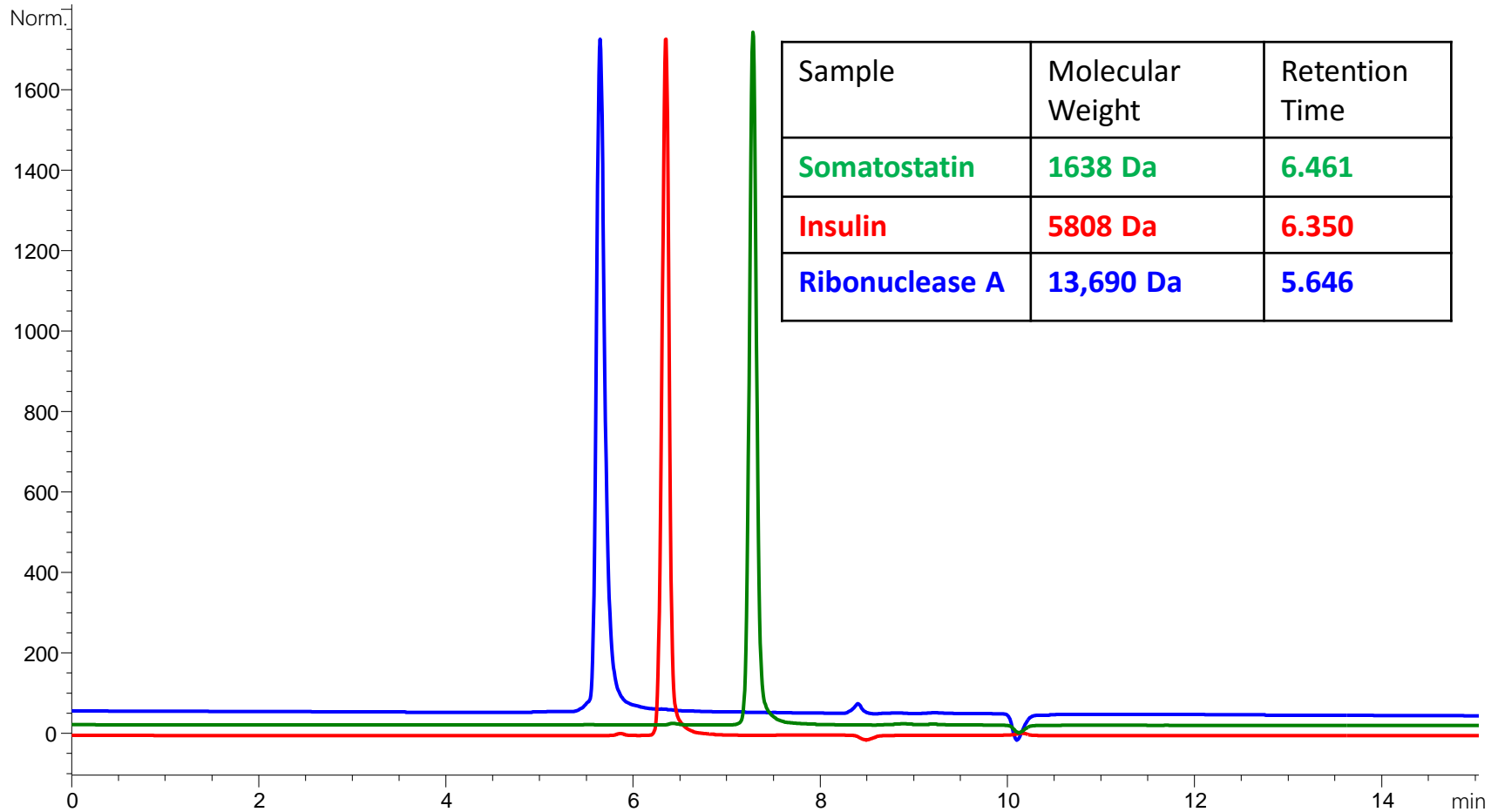
Column: Zenix SEC-100, 3 μ m, 100Å, 7.8 \times 300mm

Mobile Phase A: 0.1% TFA + 65% ACN;

Flow rate: 1.0 mL/min; Temperature: 30°C;

Detection: UV 225 nm

Injection Volume: 5.0 μ L 1mg/mL Ribonuclease A (RA) and Somatostatin, 3.47 mg/mL insulin



Bradykinin Acetate and Thymosin α 1

Column: Zenix SEC-100, 3 μ m, 100Å, 7.8 \times 300mm

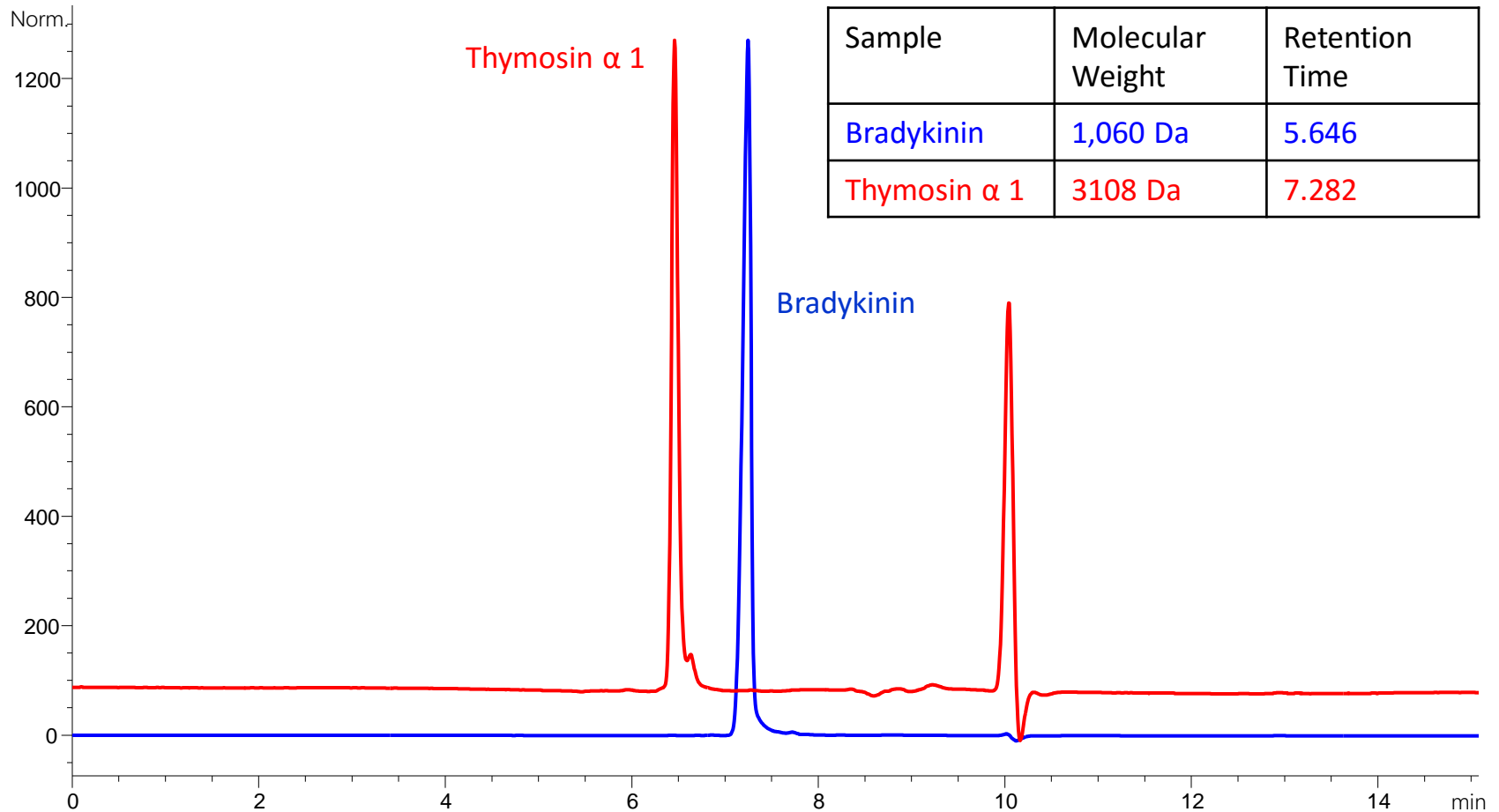
Mobile Phase A: 0.1% TFA + 65% CAN

Flow rate: 1.0 mL/min;

Temperature: 30°C;

Detection: UV 225 nm

Injection Volume: 5.0 μ L 1mg/mL thymosin and 5 mg/mL bradykinin



Life time study of Zenix SEC-100 with salt & 10% MeOH mobile phase

Column: Zenix SEC-100, 3 μ m, 100Å, 4.6 \times 150mm

Mobile Phase: 200 mM Sodium Phosphate + 150 mM NaCl + 10% Methanol

Flow rate: 0.5 ml/min

Column Temperature: 25°C

Detection: UV 214 nm

Sample: BSA (66 kD), Ribonucelase A (RA, 14 kD), Uracil (120 Da); Injection Amount: 3 μ L

