

Fusion Protein (Enbrel) Separation on Unix-C SEC-300 UHPLC Column

Sepax, Unix-C SEC-300 1.8 μm 300 Å 4.6x300 mm
(PN: 231300-4630)



Enbrel Separation on Unix-C SEC-300

WP1001

Column: Unix-C SEC-300 (1.8 μm , 300 \AA , 4.6 x 300 mm)
(PN: 231300-4630)

Mobile phase: 150 mM phosphate buffer, pH 7.0

Flow rate: 0.3 mL/min

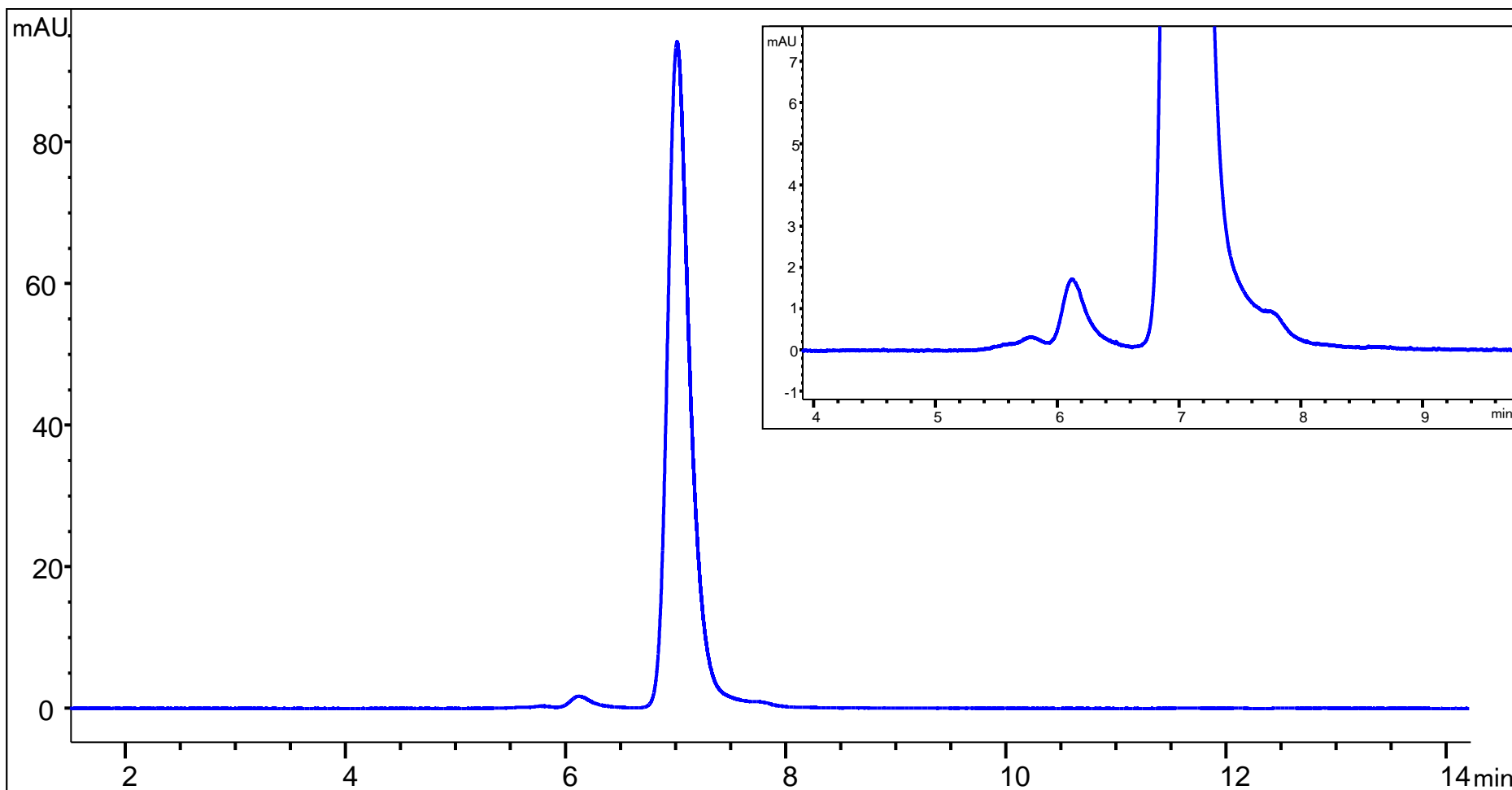
System: UHPLC

Detector: UV 280 nm

Column temperature: Ambient

Injection volume: 0.5 μL

Samples: 25 mg/mL Enbrel fusion protein



Enbrel Separation on Unix-C SEC-300 (Fresh vs Degraded)

WP1001

Column: Unix-C SEC-300 (1.8 μm , 300 \AA , 4.6 x 300 mm)
(PN: 231300-4630)

Detector: UV 280 nm

Column temperature: Ambient

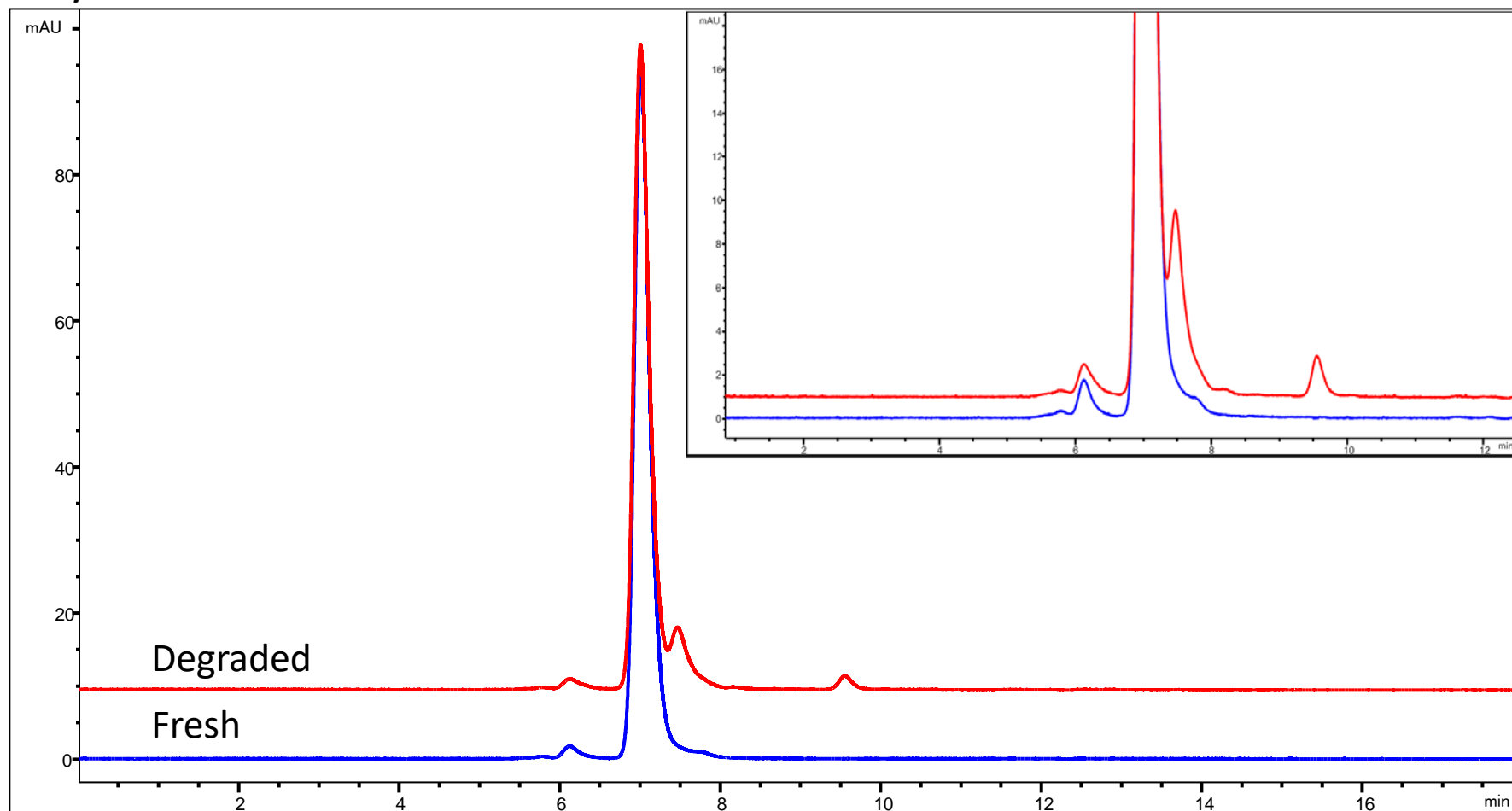
Mobile phase: 150 mM phosphate buffer, pH 7.0

Injection volume: 0.5 μL

Flow rate: 0.3 mL/min

Samples: 25 mg/mL Enbrel fusion protein

System: UHPLC



Degraded Enbrel Separation on Unix-C SEC-300 - Sepax vs. Other Vendor

Column: Unix-C SEC-300 (1.8 μm , 300 \AA , 4.6 x 300 mm) **System:** UHPLC

(PN: 231300-4630) and Sub 2 μm UPLC SEC column
from other Vendor (4.6 x 300 mm)

Mobile phase: 150 mM phosphate buffer

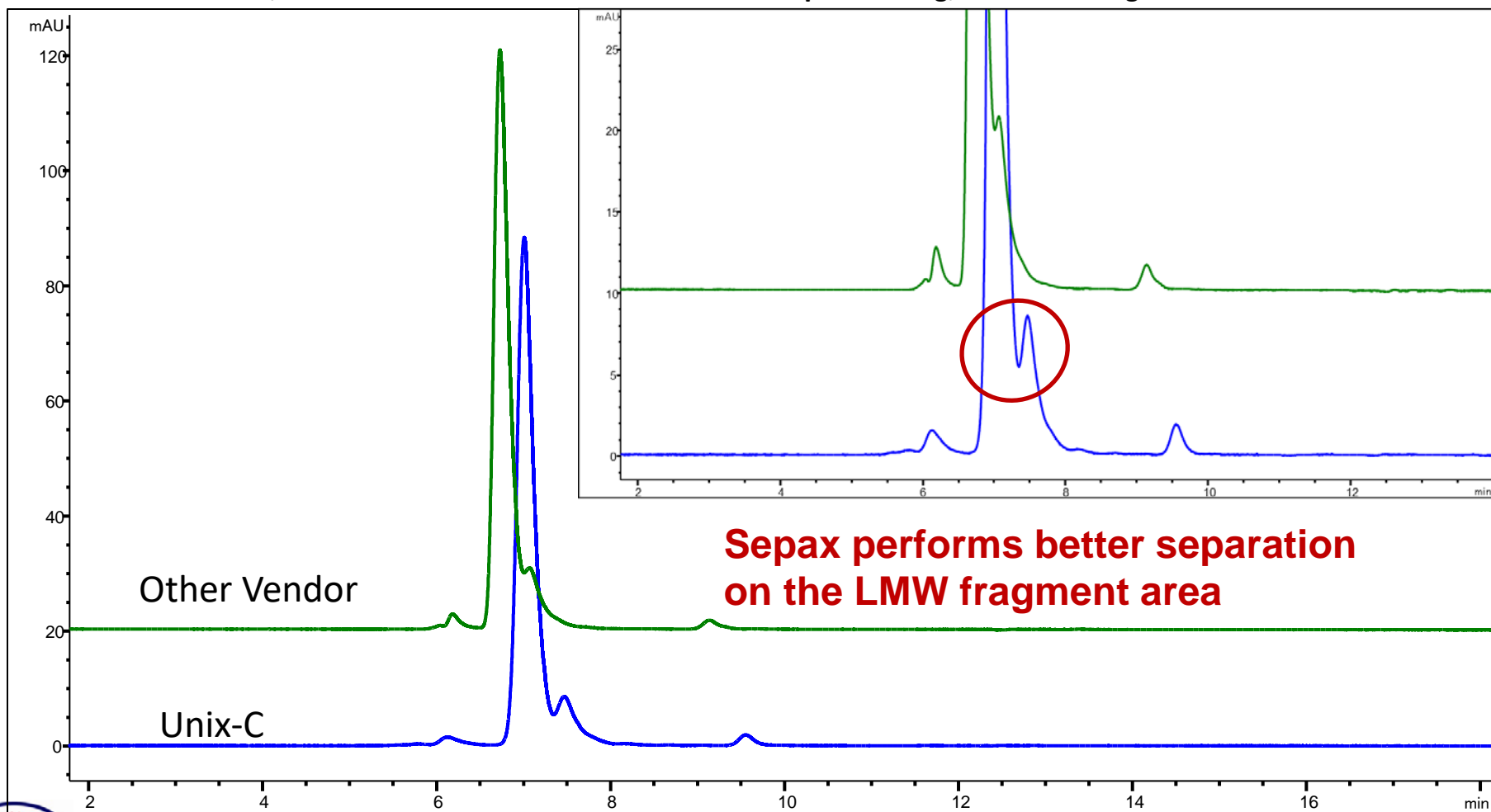
Flow rate: 0.3 mL/min

Detector: UV 280 nm

Column temperature: Ambient

Injection volume: 0.5 μL

Samples: 25 mg/mL Enbrel degraded



**Sepax performs better separation
on the LMW fragment area**

