

ADC Separation on Unix-C SEC-300 UHPLC Column

Sepax Unix-C SEC-300 1.8 μm 300 Å 4.6x300 mm
(PN: 231300-4630)



Cysteine ADC Separation on Unix-C SEC-300

WM1002

Column: Unix-C SEC-300 (1.8 μm , 300 \AA , 4.6 x 300 mm)
(PN: 231300-4630)

Mobile phase: 150 mM phosphate buffer, pH 7.0

Flow rate: 0.3 mL/min

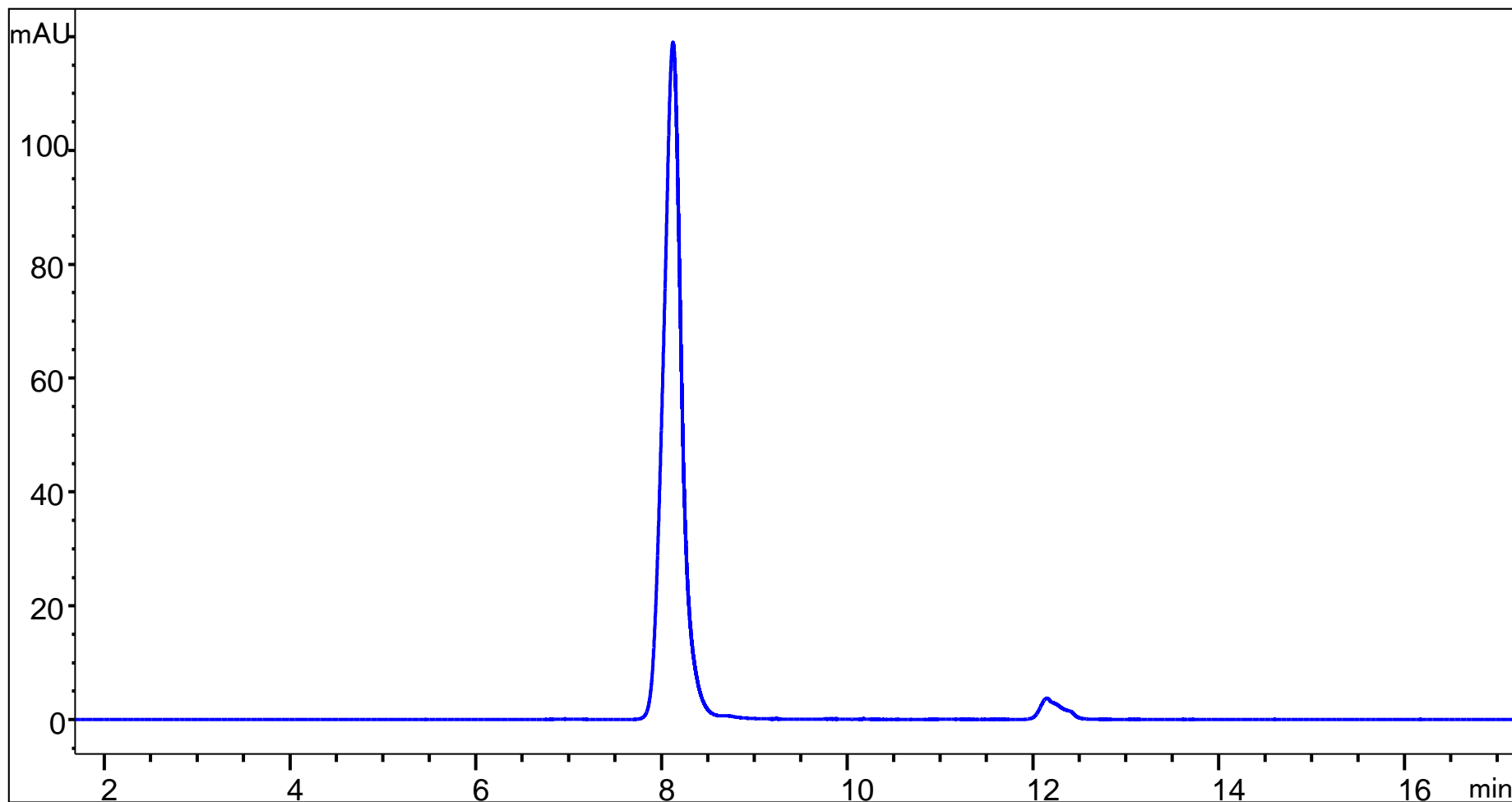
System: UHPLC

Detector: UV 280 nm

Column temperature: Ambient

Injection volume: 10 μL

Samples: 1 mg/mL ADC



Cysteine ADC Separation – Sepax vs. Other Vendor

Column: Unix-C SEC-300 (1.8 μm , 300 \AA , 4.6 x 300 mm) and Sub 2 μm UPLC SEC column from other Vendor (4.6 x 300 mm)
Detector: UV 280 nm
Column temperature: Ambient
Injection volume: 10 μL
Mobile phase: 150 mM phosphate buffer
Samples: 1 mg/ml ADC
Flow rate: 0.3 mL/min

