

# SV1006: VLP analysis on Large Pore Size SEC-MALS

HPLC Column, Sepax, SRT SEC-1000, 5  $\mu\text{m}$ , 7.8x300mm,  
Light Scattering SEC (215950LS-7830)

HPLC Column, Sepax, SRT-C SEC-2000, 5  $\mu\text{m}$ , 7.8x300mm,  
Light Scattering SEC (235980LS-7830)



# VLP #1 SEC/MALS analysis, SRT SEC-1000

SV1006

**Column:** SRT SEC-1000 (5  $\mu\text{m}$ , 1000  $\text{\AA}$ ),  
7.8x 300 mm, Light Scattering

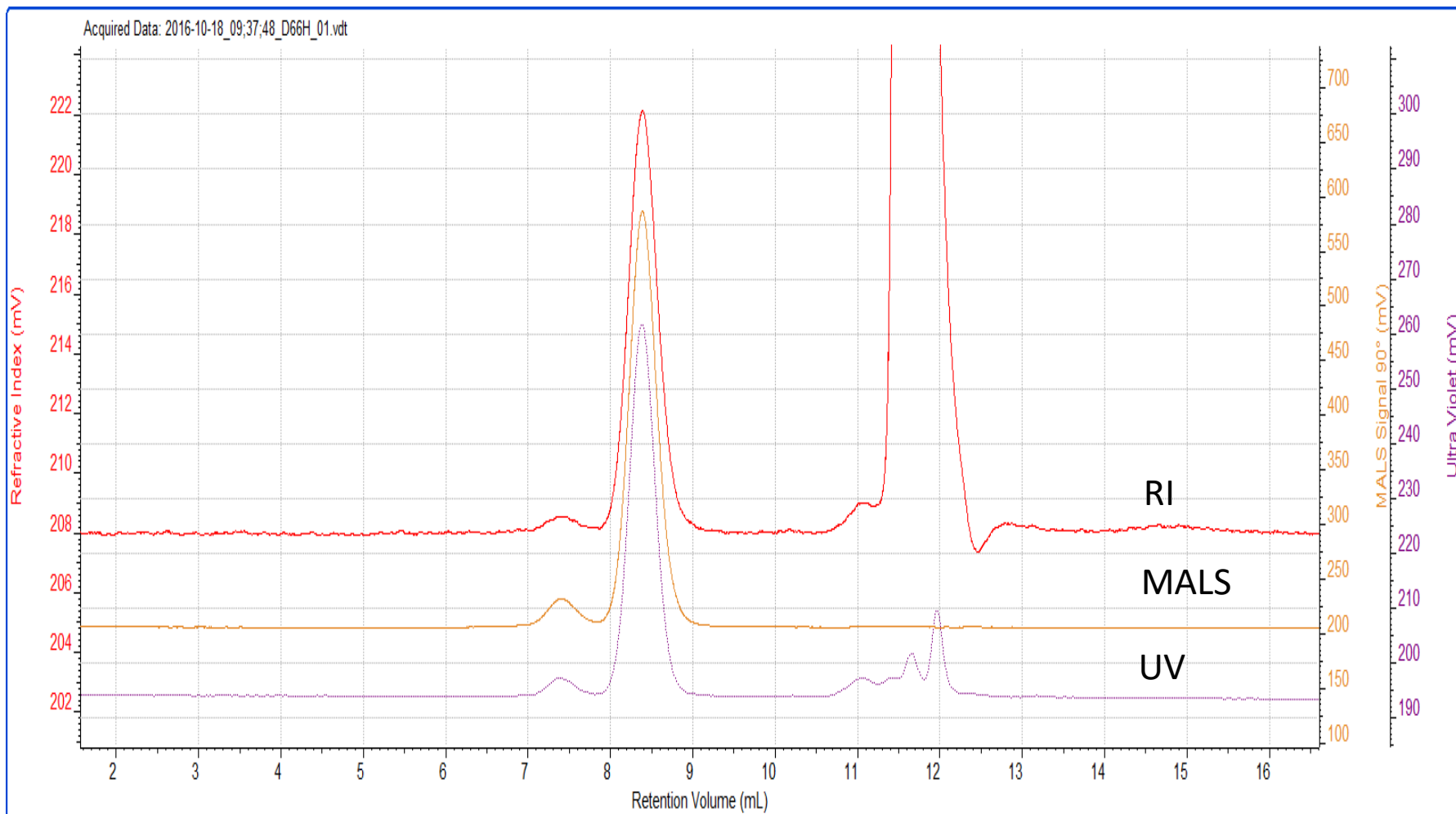
**Flow rate:** 1 mL/min

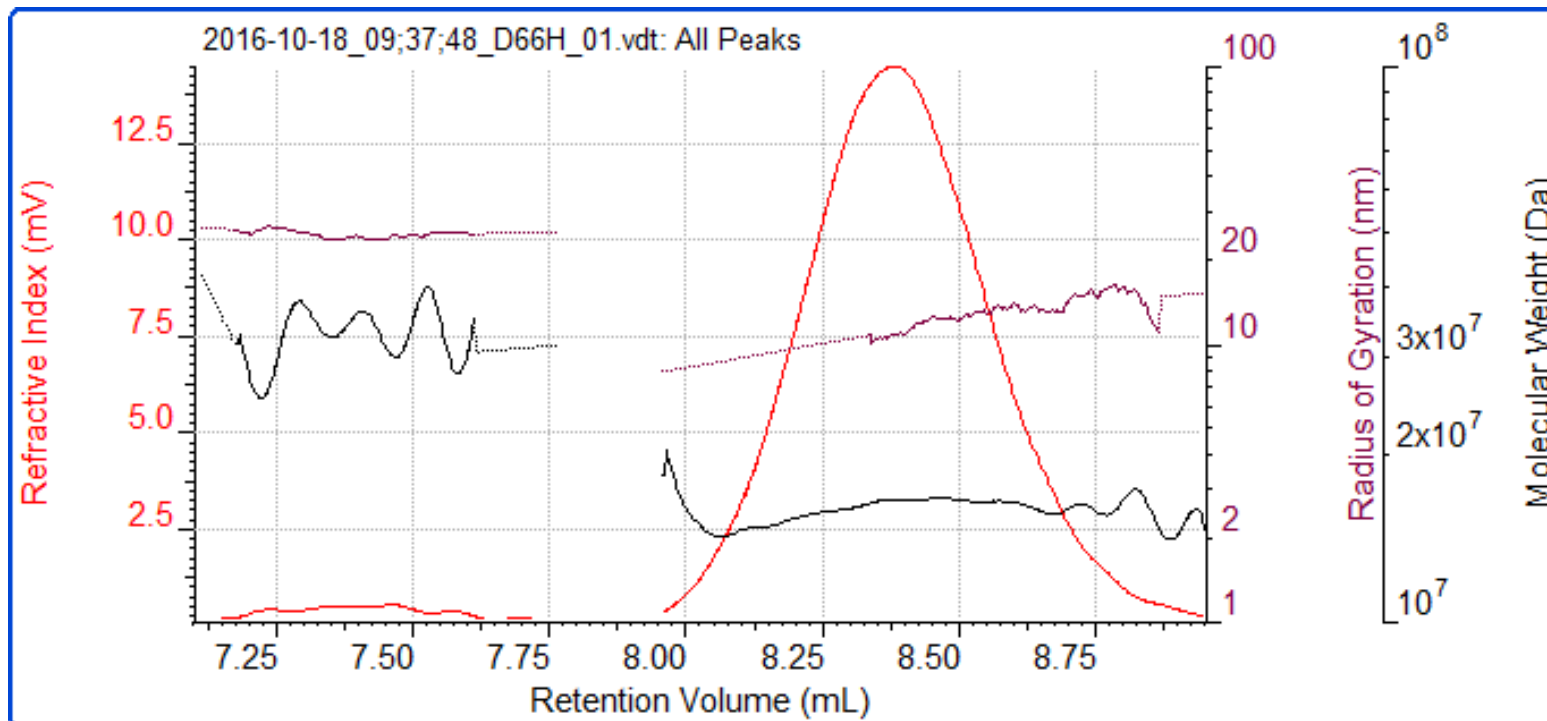
**Mobile phase:** 25 mM Tris, 150 mM NaCl,  
1 mM  $\text{CaCl}_2$ , pH 7.5

**Detector:** UV 280 nm, RI, MALS

**Column temperature:** 25  $^{\circ}\text{C}$

**Injection volume:** 50  $\mu\text{g}$  protein VLP 1





### Light Scattering results

Peak	1	2
Ret Vol (mL)	7.438	8.369
Mw (Da)	3.267 e 7	1.609 e 7
Mw/Mn	1.011	1.001
Rg(w) (nm)	24.75	11.31
Wt Fr (Peak)	0.0348	0.9652
MALS Area (90°)	10.83	153.69

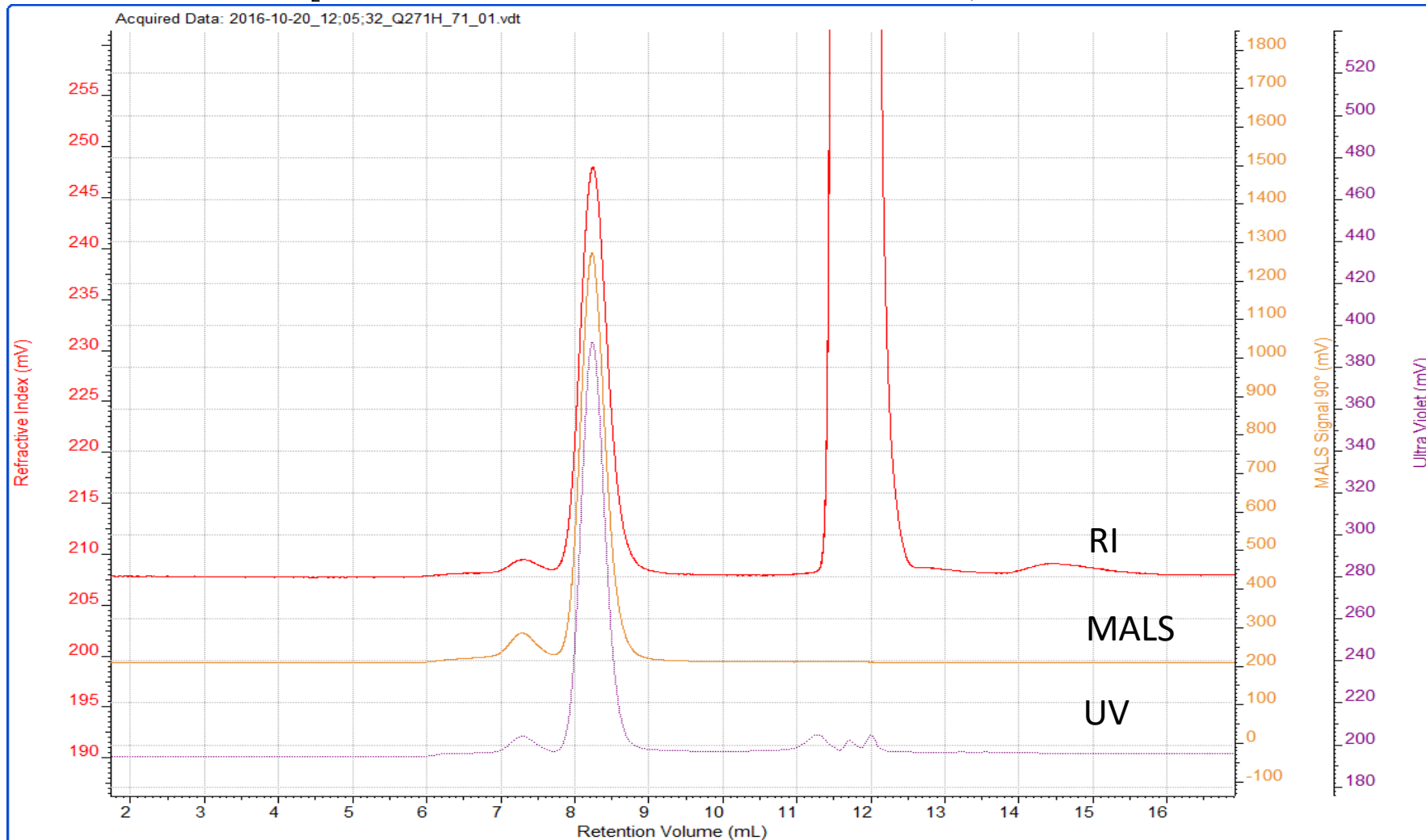


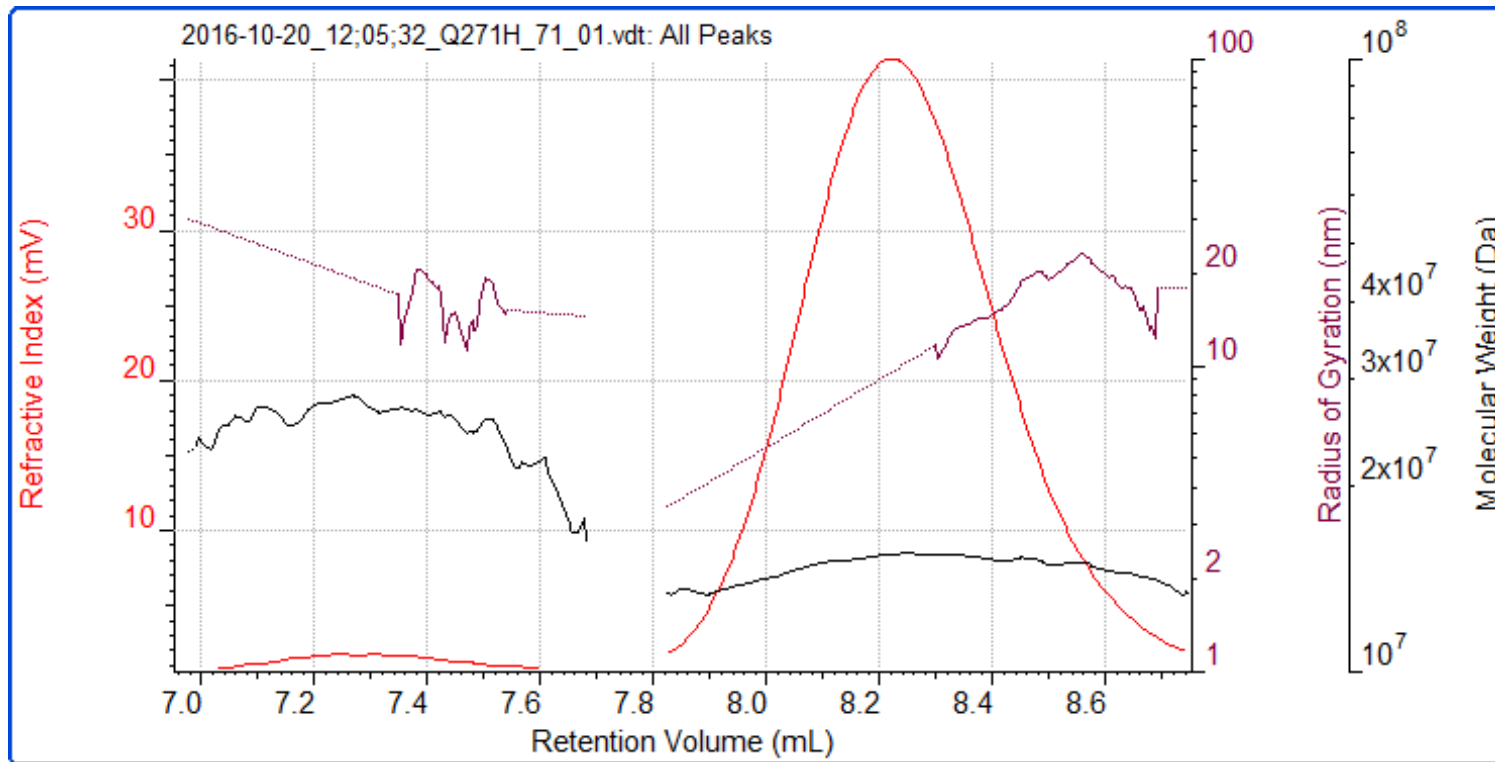
# VLP #2 SEC/MALS analysis, SRT SEC-1000

SV1006

**Column:** SRT SEC-1000 (5  $\mu\text{m}$ , 1000  $\text{\AA}$ ),  
7.8x 300 mm, Light Scattering  
**Mobile phase:** 25 mM Tris, 150 mM NaCl,  
1 mM  $\text{CaCl}_2$ , pH 7.5

**Flow rate:** 1 mL/min  
**Detector:** UV 280 nm, RI, MALS  
**Column temperature:** 25  $^\circ\text{C}$ ,  
**Injection volume:** 50  $\mu\text{g}$  protein VLP 2





### Light Scattering results

Peak	1	2
Ret Vol (mL)	7.266	8.217
Mw (Da)	2.550 e 7	1.510 e 7
Mw/Mn	1.011	1.001
Rg(w) (nm)	19.06	10.83
Wt Fr (Peak)	0.0461	0.9539
MALS Area (90°)	35.78	429.70

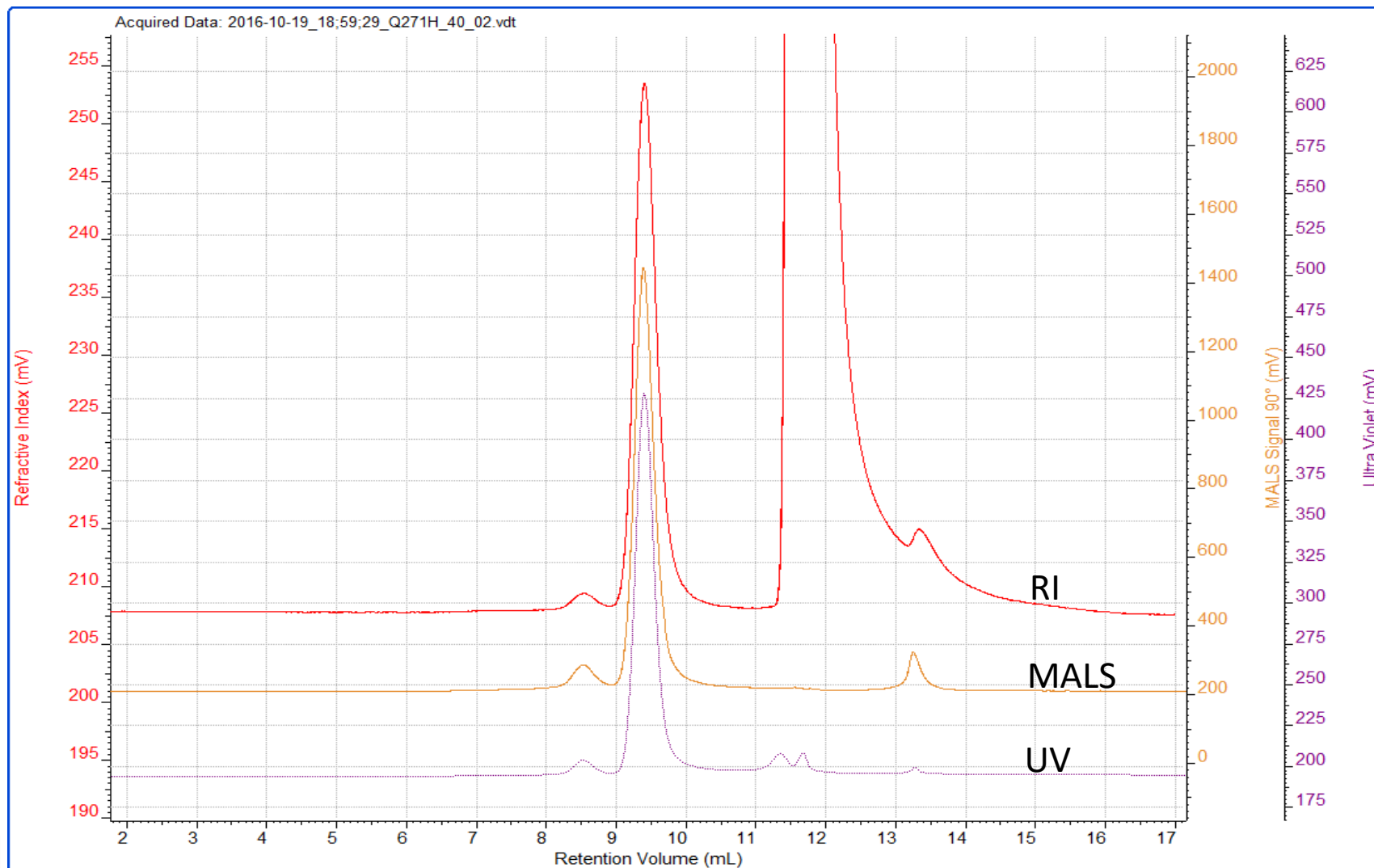


# VLP #2 SEC/MALS analysis, SRT-C SEC-2000

SV1006

**Column:** SRT-C SEC-2000 (5  $\mu\text{m}$ , 2000  $\text{\AA}$ ),  
7.8x 300 mm, Light Scattering  
**Mobile phase:** 25 mM Tris, 150 mM NaCl,  
1 mM  $\text{CaCl}_2$ , pH 7.5

**Flow rate:** 1 mL/min  
**Detector:** UV 280 nm, RI, MALS  
**Column temperature:** 25  $^\circ\text{C}$ ,  
**Injection volume:** 50  $\mu\text{g}$  protein VLP 2

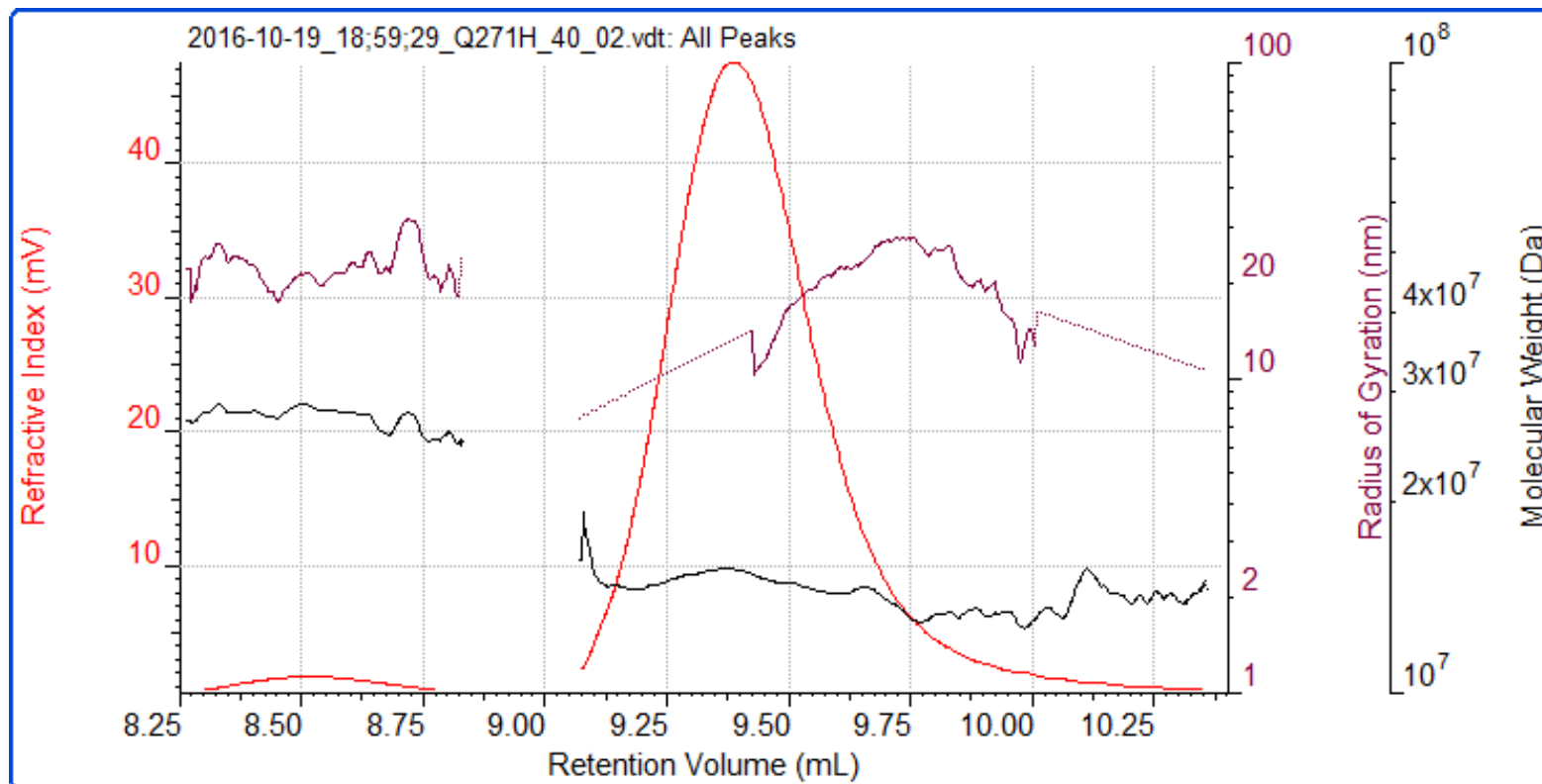


6

[www.sepax-tech.com](http://www.sepax-tech.com)



Better Surface Chemistry for Better Separation © Sepax Technologies, Inc.



### Light Scattering results

Peak	1	2
Ret Vol (mL)	8.512	9.384
Mw (Da)	2.744 e 7	1.496 e 7
Mw/Mn	1.001	1.002
Rg(w) (nm)	22.15	14.50
Wt Fr (Peak)	0.0362	0.9638
MALS Area (90°)	28.98	435.11



# VLP #2 SRT SEC-1000 vs. SRT-C SEC-2000

SV1006

**Column:** SRT SEC-1000 (5  $\mu\text{m}$ , 1000  $\text{\AA}$ ), SRT-C SEC-2000 (5  $\mu\text{m}$ , 2000  $\text{\AA}$ ), 7.8x 300 mm, Light Scattering  
**Mobile phase:** 25 mM Tris, 150 mM NaCl, 1 mM  $\text{CaCl}_2$ , pH 7.5

**Flow rate:** 1 mL/min  
**Detector:** UV 280 nm, RI, MALS  
**Column temperature:** 25  $^\circ\text{C}$ ,  
**Injection volume:** 50  $\mu\text{g}$  protein VLP #2

