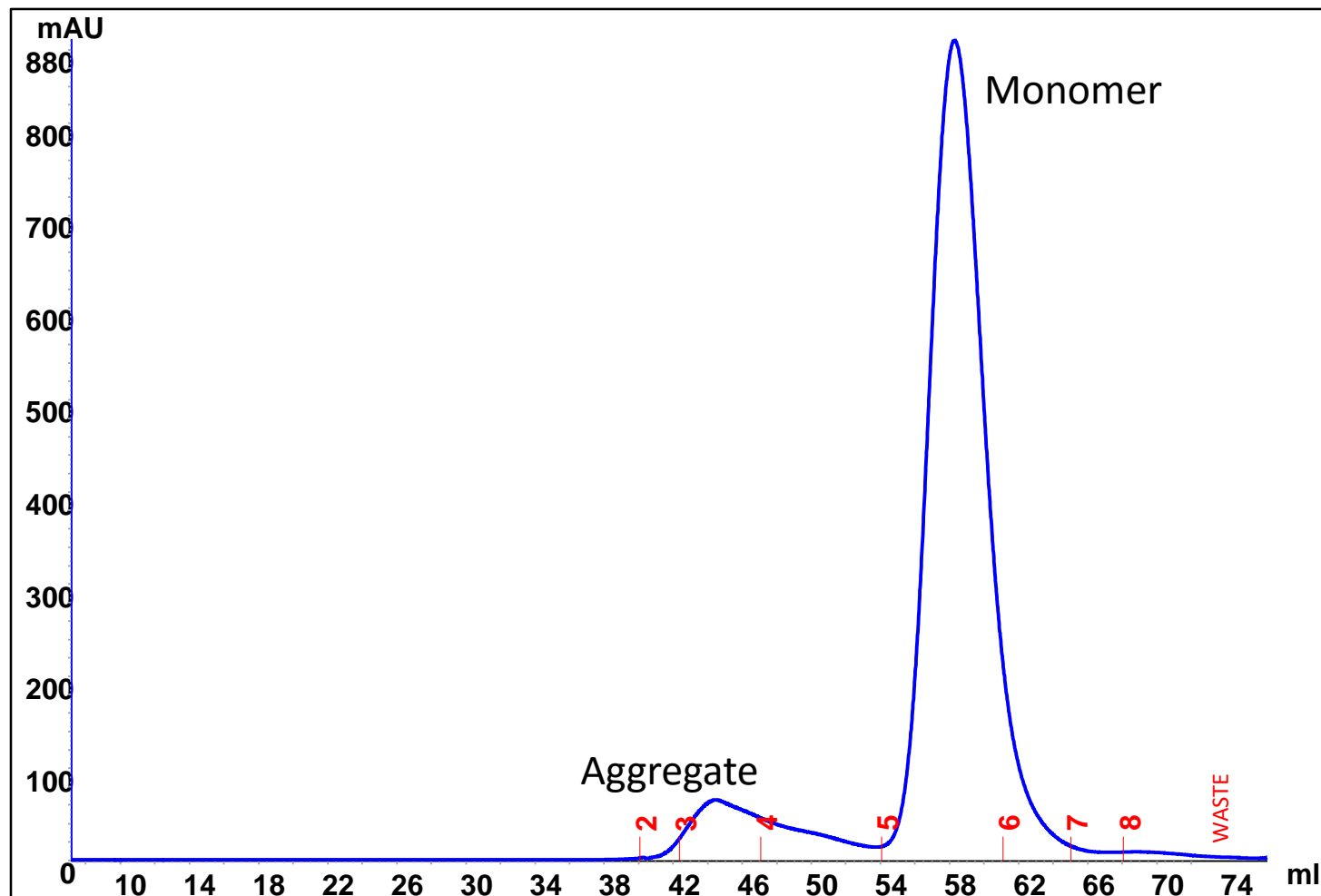


# mAb purification on SRT SEC-300 21.2 x 300 mm

Column: SRT SEC-300 (5  $\mu\text{m}$ , 300 $\text{\AA}$ , 21.2 x 300 mm), P/N: 215300-21230

Mobile phase: sodium phosphate buffer, 150mM, pH7.0 , Flow rate: 7 mL/min; Detector: UV 280 nm,  
Column temperature: 4  $^{\circ}\text{C}$  , Samples: 3 mL monoclonal antibody 5 mg/mL, instrument: Akta pure



# Rituximab purification on SRT SEC-300 21.2 x 300 mm

Column: SRT SEC-300 (5  $\mu$ m, 300Å, 21.2 x 300 mm), P/N: 215300-21230

Mobile phase: sodium phosphate buffer, 150mM, pH7.0 , Flow rate: 7 mL/min; Detector: UV 280 nm, temp: 4 °C ,

Samples: 1 mL **Rituximab** 10 mg/mL in 25 mM sodium citrate, 154 mM NaCl, 0.07% tween-80, pH 6.5, instrument: Akta pure

