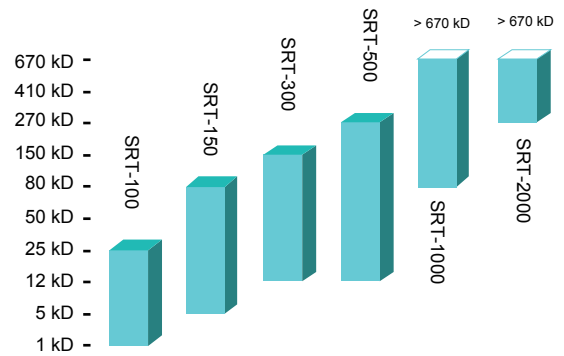
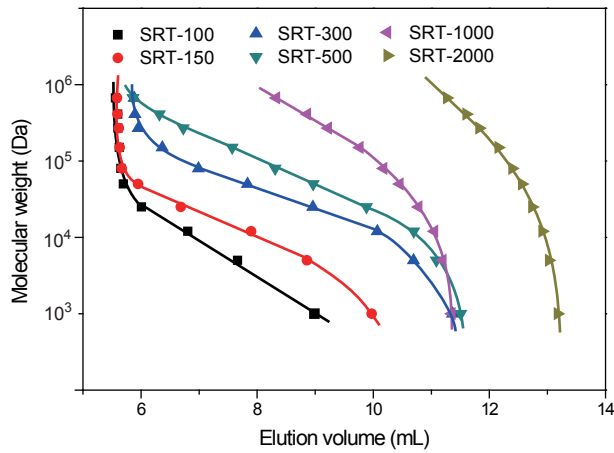


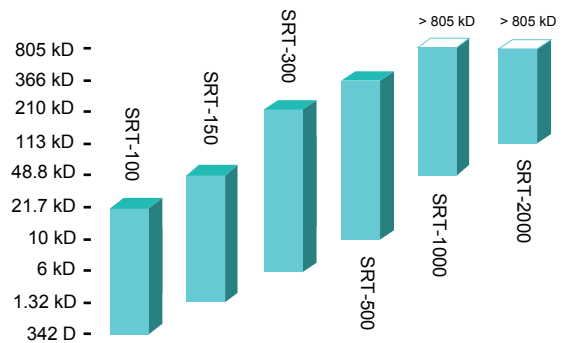
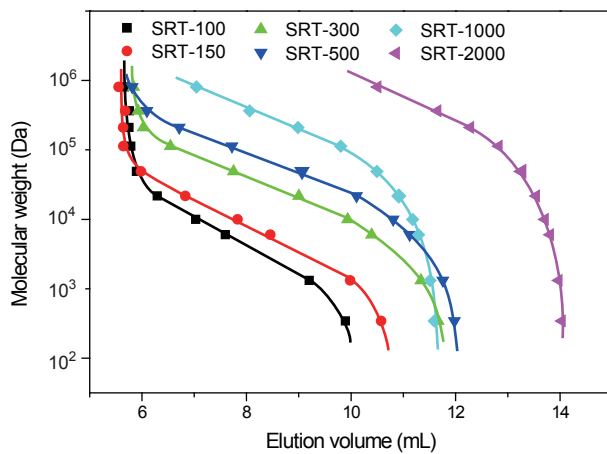
# SEC Column Selection Guide for the Separation of Water-soluble Polymers

## Dextrans



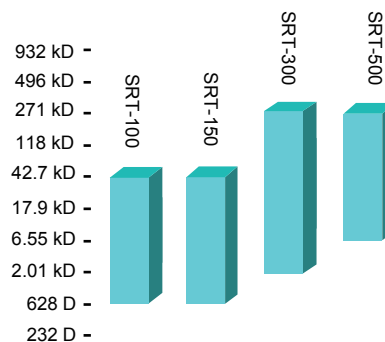
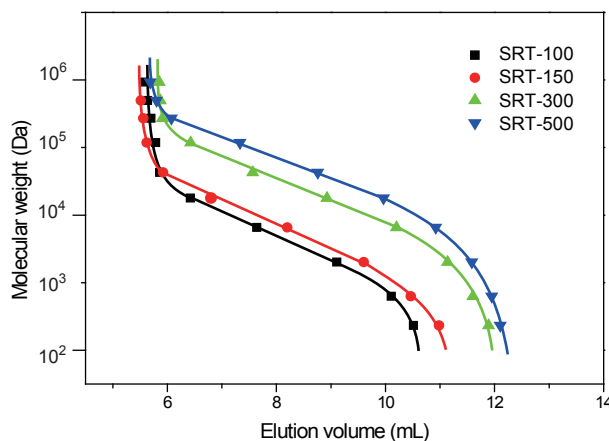
Linear distribution region between Log MW & Elution volume

## Pullulans



Linear distribution region between Log MW & Elution volume

## Polyethylene Glycols



Linear distribution region between Log MW & Elution volume

Data generated using the following conditions:

Column: SRT columns, 7.8 x 300 mm; Mobile phase: 150 mM phosphate buffer (pH 7.0); Flow rate: 1.0 mL/min;

Detection: RI; Column temperature: 25 °C; Injection volume: 20  $\mu$ L

Note: This column selection guide is applicable for other dimensions and series which including SRT-C, Zenix, and Zenix-C.