

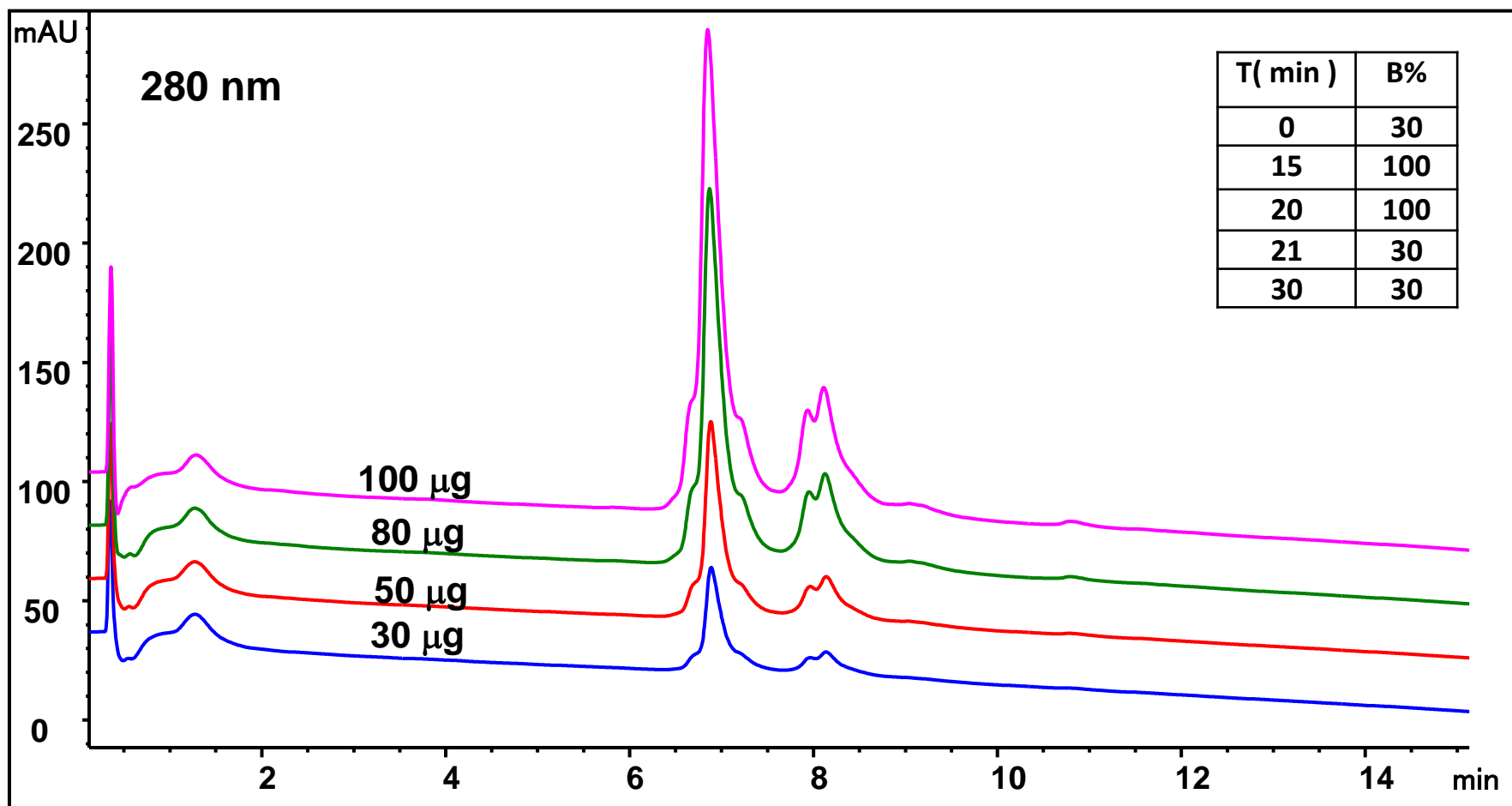
MAb loading on Proteomix[®] HIC Butyl-NP5, 4.6 x 50 mm

Column: Proteomix[®] HIC Butyl-NP5 (5 μ m, 4.6 x 50 mm, p/n 431NP5-4605, 0.83 mL resin);

Mobile phase: A: 2 M ammonium sulfate in 0.1M sodium phosphate, pH 7.0, B: 0.1M phosphate pH 7.0,

Flow rate: 1.0 mL/min, Detector: UV 280 nm, Column temperature: 25 ° C, instrument: Agilent 1260

Sample: 12, 20, 32, 40 μ L 2.5 mg/mL mAb in 50% A, column pressure: 105 Bar



MAb loading on Proteomix® HIC Butyl-NP5, 21.2 x 50 mm

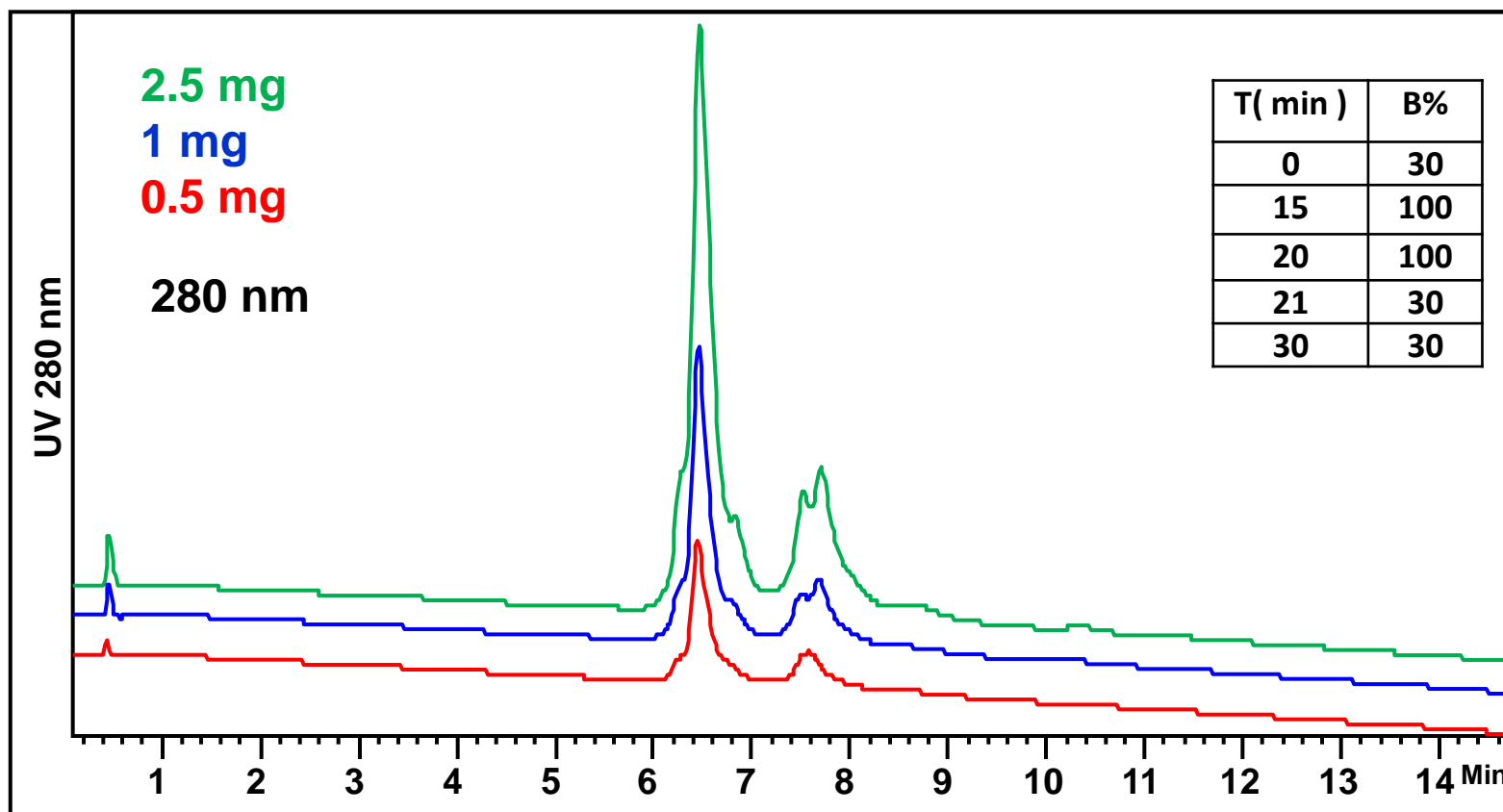
Column: Proteomix® HIC Butyl-NP5 (5 μ m, 21.2 x 50 mm, p/n 431NP5-21205, 17.7 mL resin);

Mobile phase: A: 2 M ammonium sulfate in 0.1M sodium phosphate, pH 7.0, B: 0.1M phosphate pH 7.0,

Flow rate: 20.0 mL/min, Detector: UV 280 nm, Column temperature: 25 ° C

Sample: 200, 400 and 1000 μ L 2.5 mg/mL mAb in 50% A, column pressure: 90 Bar

Instrument: Waters Prep HPLC



MAb loading on Proteomix HIC Butyl-NP5, 21.2 x 50 mm

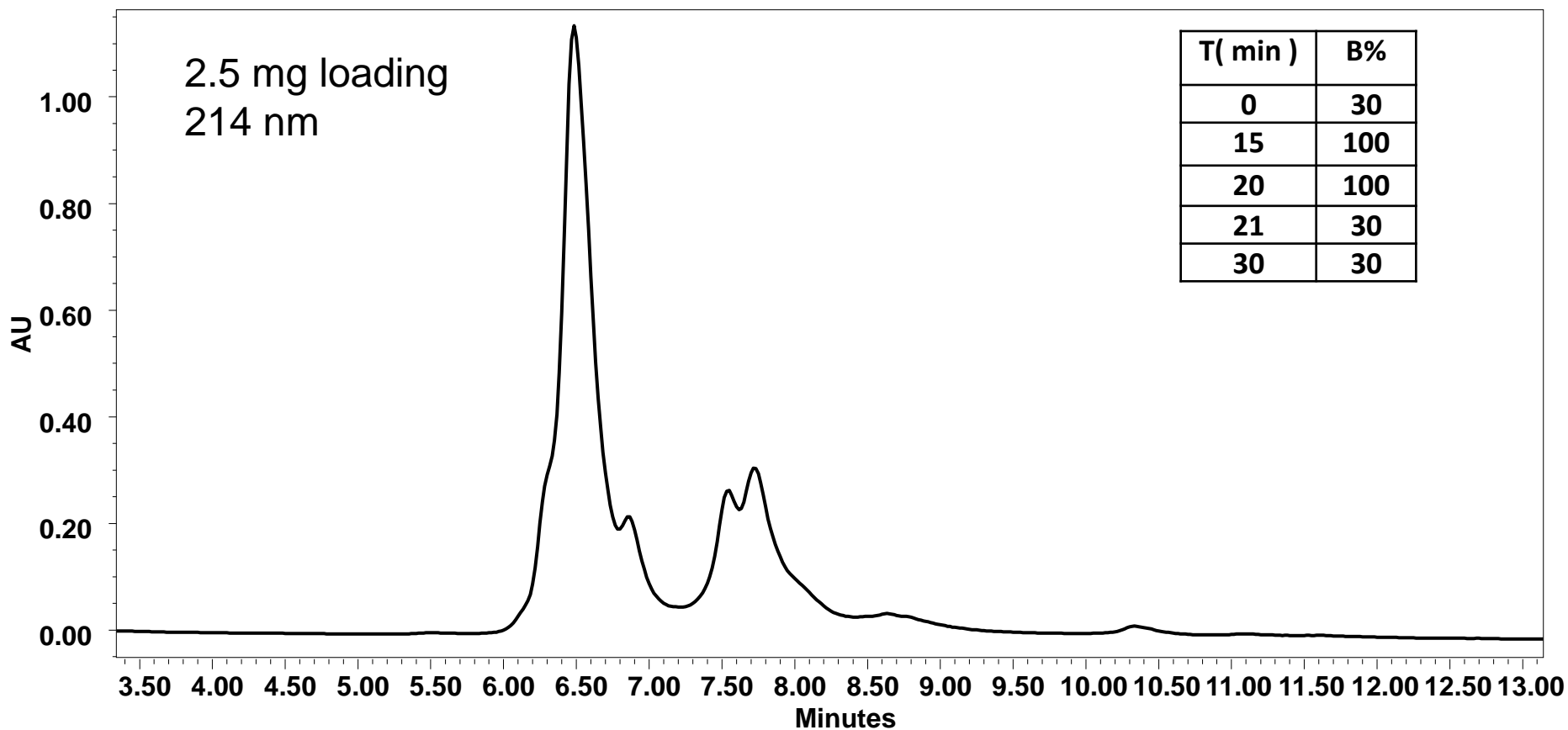
Column: Proteomix HIC Butyl-NP5 (5 μ m, 21.2 x 50 mm, 17.7 mL resin);

Mobile phase: A: 2 M ammonium sulfate in 0.1M sodium phosphate, pH 7.0, B: 0.1M phosphate pH 7.0,

Flow rate: 20.0 mL/min, Detector: UV 214 nm, Column temperature: 25 $^{\circ}$ C

Sample: 1000 μ L 2.5 mg/mL mAb in 50% A, column pressure: 90 Bar

Instrument: Waters Prep HPLC



Product Information

Column	Part number
Proteomix [®] HIC Butyl-NP5, 5 μ m, 4.6 x 50 mm	431NP5-4605
Proteomix [®] HIC Butyl-NP5, 5 μ m, 21.2 x 50 mm	431NP5-21205

