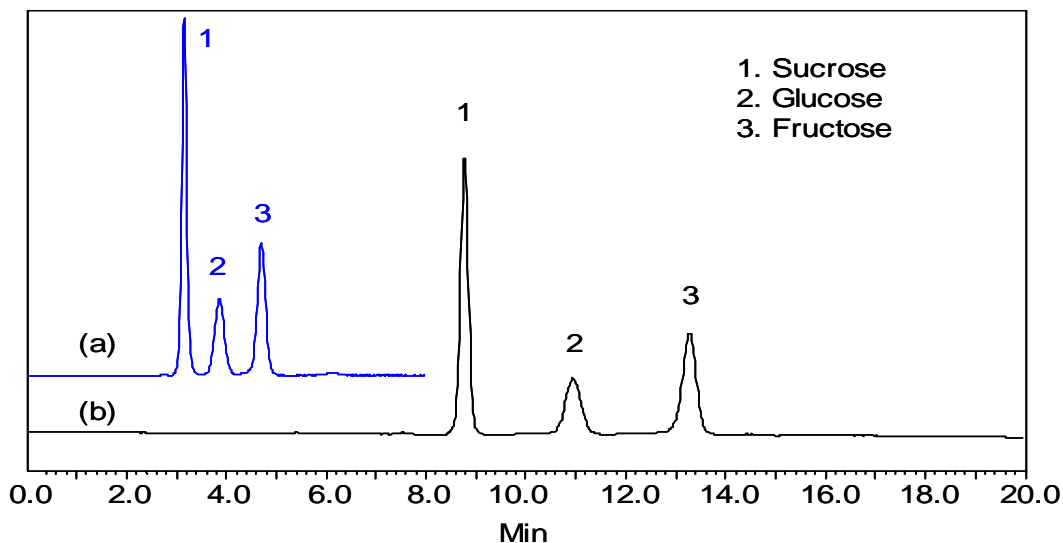




**Analysis of Carbohydrates in Orange Juice on Carbomix[®]-Ca (5 μ m, 8%) -
Fast analysis with shorter column**



Columns: Carbomix[®] Ca-NP5 (5 μ m, 8% crosslinkage) (a) 7.8 x 100 mm;
(b) 7.8 x 300 mm

Mobile Phase: water

Temperature: 85 °C

Flow Rate: 0.6 mL/min

Detection: RI

Injection Volume: 10 μ L

Samples: Sucrose, glucose and fructose (15 mM/each)

Keywords: Carbohydrate, Carbomix, calcium form, sugar, orange juice, sucrose, glucose, fructose